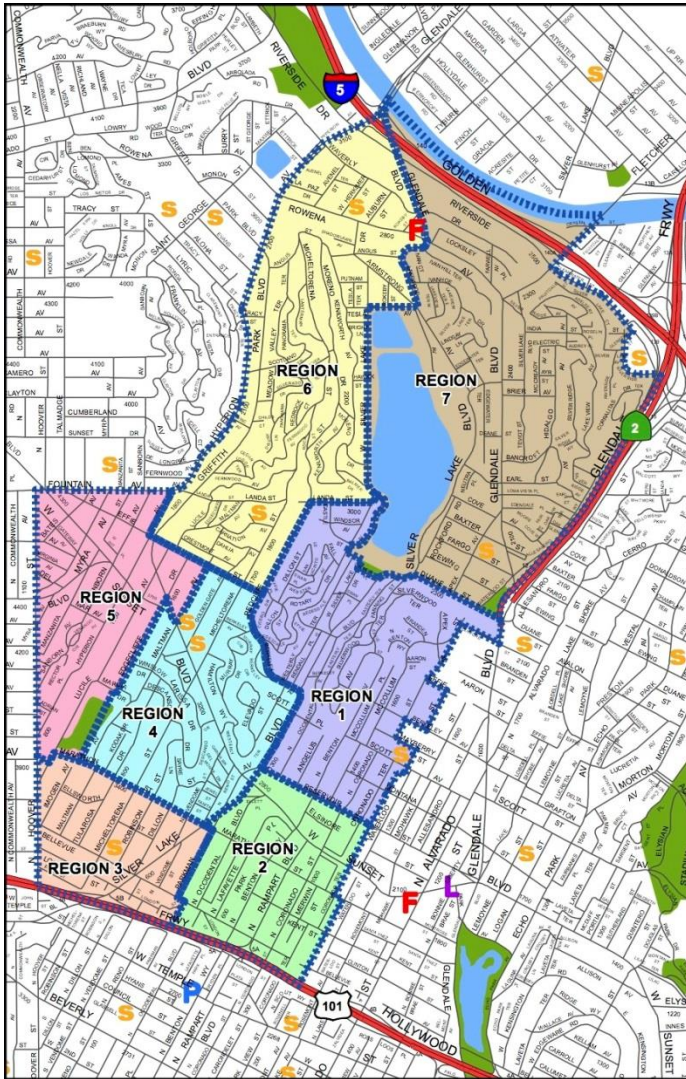


# Silver Lake Neighborhood Council Recent Area Outages

Silver Lake Neighborhood Council  
Transportation and Neighborhood Safety Committee Meeting  
September 5, 2017

Putting Customers First 

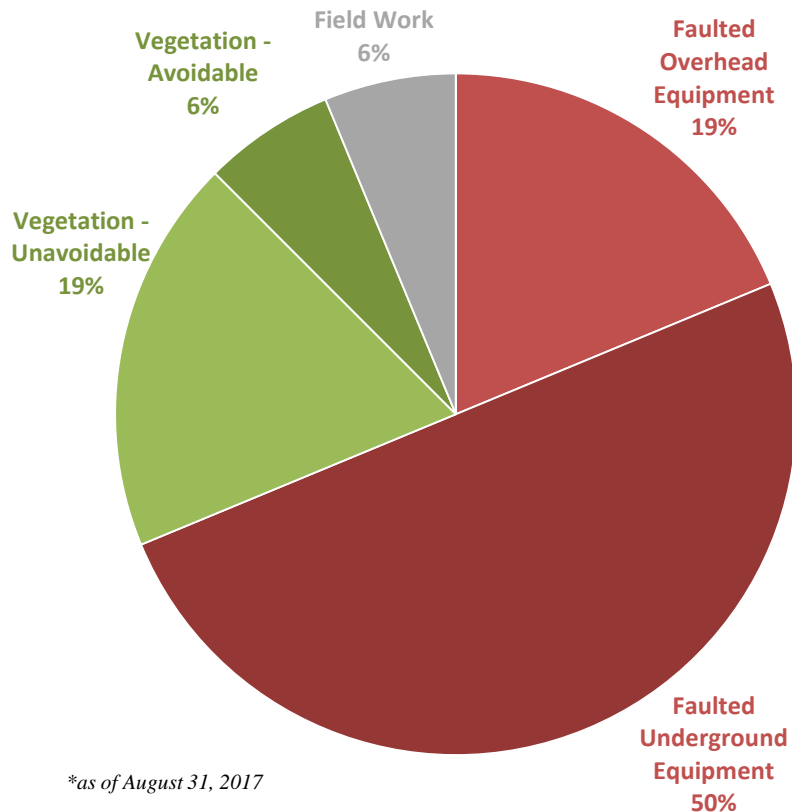
# Silver Lake Area Distribution System



- **14 Feeder Circuits (4.8-kV)**
  - 97.7 total circuit miles
    - 82.0 overhead miles (83.9%)
    - 15.7 underground miles (16.1%)
- **3 Distributing Stations (DS)**
  - DS 15
  - DS 25
  - DS 26
- **6,241 Trees and Palm Trees**
  - Property lines
  - Public streets
- **25,429 Total Customers**

# Silver Lake Area Recent Circuit Outages

## Root Cause of Outages (2017\*)



- 16 area outages this year to date
- Outages due to aging infrastructure and increased customer loading
- Severe weather contributed to outages and impacted system reliability
- **LADWP has made a number of investments to address these issues and proactively replace infrastructure**

# Silver Lake Area System Improvements

## Cable Replacement

- 25,925 feet of cable replaced
- 6,352 feet of cable under construction
- 18,691 feet of cable in design

## System Load Growth

- 9,293 feet of conductor replaced and/or upgraded
- 5,597 feet of cable upgraded
- 2,376 feet of conductor in design

## Distributing Stations

- 1 circuit upgraded at DS 15
- 1 circuit re-energized at DS 25
- 2 circuit jobs in Construction (DS 15 & 26)

## Vegetation

- All Silver Lake regions had their trees inspected and/or trimmed between March 2016 and July 2017

# Helpful Tips

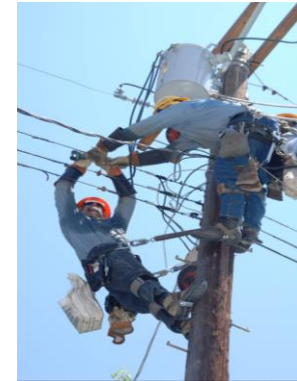
To report a power outage, customers should call **1-800-DIAL-DWP.**

To check the status of a Power outage

- Visit [www.ladwp.com](http://www.ladwp.com)
- Follow LADWP on Twitter



**@LADWP**



# Questions & Answers